

## Technical Rider

# Mezzoforte

**PA:** d&b audiotechnik, L Acoustic, Meyer, 110db at FOH position

**FOH:** 32/8/2 FOH Console, Midas , Yamaha PM Serie, Soundcraft ,  
per Ch. 4 param. EQ, Lowcut, 8 Aux sends, VCA groups

**FX:** 1 x PCM 70/81/91  
1 x SPX 990  
1 x TC 2290  
5 Ch. Gate , Drawner BSS, ( no Behringer)  
7 Ch. Comp., dbx, BSS, (no Behringer)  
2 x 31 EQ, Klark Technik, Yamaha,( no 2031)  
1 x CD Player

**Mon:** 5 similar 15/2 Wedges, d&b Max, Nexo PS15  
3 x 31 Band EQ, Klark Technik , Yamaha ( no 2031)  
5 pre Fader sends from the FOH desk

Aux 1: Bass 1 x Wedge  
Aux 2: Sax 1 x Wedge  
Aux 3 : Git 1 x Wedge  
Aux 4: to Keysubmixer  
Aux 5: to InEar Drums

The 2 powered Keywedges are connected direkt to the Keymixer.

**Mic:** like inputlist

**Stage:** 10 m x 7m , 1m high

**Personal:** we need 1 proffesional Soundtechnician to do the Monitorsound

## Inputliste

### Band: Mezzoforte 2004

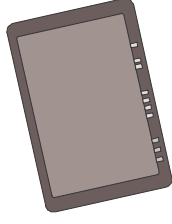
Ch.	Instrument	Mikrofon	Insert FOH	Insert Mon
1	BD	SM 91 A/ Beta 52	Gate 1	
2	SD 1 top	SM 57	Comp.1	
3	SD 1 bottom	SM 57	Comp. 2	
4	SD 2	SM 57	Comp. 3	
5	HH	KM 184		
6	HH	KM 184		
7	Tom	Beta 98	Gate 2	
8	Tom	Beta 98	Gate 3	
9	Tom	Beta 98	Gate 4	
10	Tom	Beta 98	Gate 5	
11	OH L	KM 184		
12	OH R	KM 184		
13	Bass	Aktiv DI	Comp.4	
14	Git.	Beta 57		
15	Key L	DI		
16	Key R	DI		
17	Key L	DI		
18	Key R	DI		
19	Loop	DI		
20	Loop	DI		
21	Sax	XLR	Comp. 5	
22	Midi Sax	DI	Comp. 6	
23	Midi Sax	DI	Comp. 7	
24	Voc	SM58		
25	PCM			
26	PCM			
27	SPX			
28	SPX			
29	TC			
30	TC			
31	CD			
32	CD			
33	TB			

# Stageplot Mezzoforte 2004

Technik: Mixtown Schwäb. Gmünd, Dominik Arnold 07171/989151 o. 0171/8928501

220 V

1 x DI Bass

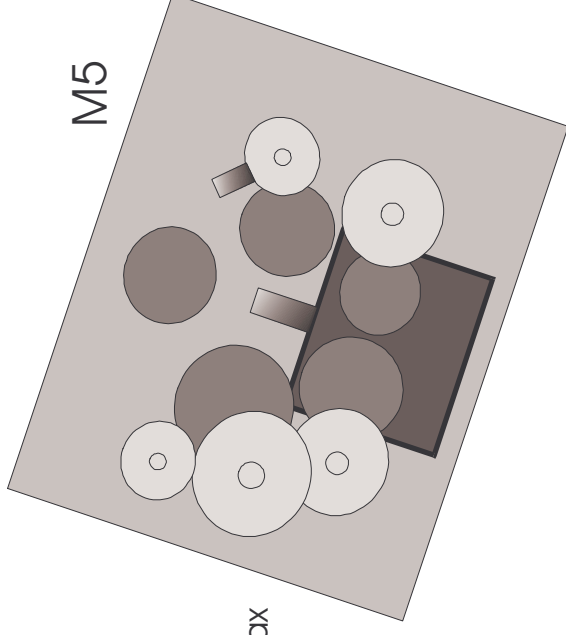


220 V

1 x XLR Sax  
2 x DI Midisax



M5



220 V

4 x DI Key  
2 x DI Loop



M4



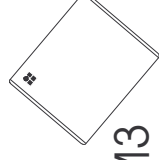
1 x 58 Voc



M1

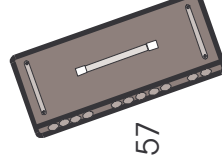


M2



M3

220 V



Git: 1 x 57